

IS IT RUDE?
IS IT MEAN?
IS IT BULLYING?

EDIE WHITE, M.ED

COORDINATOR FOR
BULLYING
PREVENTION



Boy, 13, Commits Suicide, Leaves Behind Letter on Bullying

Aug 14, 2016 2:15 PM CDT



Bullies Taunt
Gay Suicide's
Sis: 'We're Glad
He's Dead'

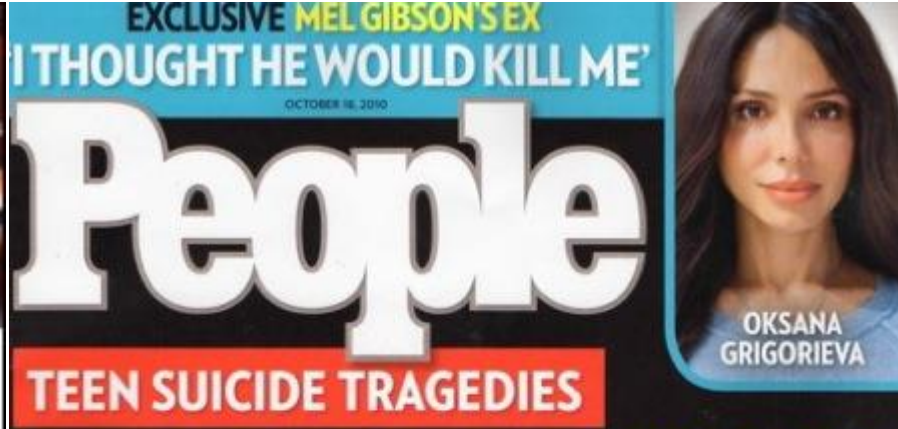
Sep 28, 2011 3:17 AM CDT



TEEN COMMITS SUICIDE AFTER BEING BULLIED
TEXAS CITY



6:00 61°



New York Bullying Victim Kills Herself

Staten Island
teen walks in
front of bus

Jan 3, 2012 5:31 PM CST



kxan 10:03 72°

DAVID'S LAW MOVING FORWARD
WOULD MAKE CYBER BULLYING A CRIME

**RUDE, MEAN,
BULLYING**

**BULLYING IS MEAN, BUT MEAN
ISN'T NECESSARILY BULLYING**



RUDE

- Inadvertently saying or doing something that hurts someone else
- Due to poor manners or lack of social skills

- Burping without saying excuse me
- Failure to acknowledge when someone is speaking
- Interrupting when someone is speaking
- Cutting in line

MEAN

- Purposefully saying or doing something to hurt someone else
- Out of anger or as revenge
- Attempt to make oneself feel better
- Impulsive cruelty

- Criticizing someone's clothing, appearance, or social status
- Tripping someone as they walk by
- Destroying someone's property

[DONATE TODAY](#)[ABOUT](#) [DAVID'S LAW](#) [DBM PROJECT](#) [NEWS](#) [RESOURCES](#) [HALEY'S HEROES](#) [GET INVOLVED](#)

David's Law

[Click here to download a printable PDF summary of David's Law.](#)

[Click here to read all of S.B. 179 David's Law.](#)

Education Code:

Under David's Law, Texas public schools will have the authority to address cyberbullying that occurs off-campus. Schools will be required to notify a bullying victim's parents of a bullying incident within three business days after the incident is reported and must notify the parents of an aggressor within a reasonable amount of time. School procedures for reporting bullying incidents must include anonymous reporting for students. Schools will be able to expel students who engage in very serious bullying. This includes bullying that (i) encourages another student to commit suicide (i.e., suicide baiting), (ii) incites violence against another student, or (iii) involves releasing indecent photos of another student. Strong protections from civil or criminal liabilities will be given to schools and school personnel who report criminal bullying to law enforcement officials. There will be new provisions in the law to promote mental health education, including

RECENT POSTS

[David's Legacy Foundation is proud to announce the launch of the David's Law Pledge](#)

[Gov. Greg Abbott signs anti-cyberbullying legislation 'David's Law'](#)

[Tolerance, anti-bullying lessons woven into classroom teachings](#)

[HomeNews Senate Bill 179 passes in State](#)

BULLYING IS...

Texas Education Code defines bullying as an act or pattern of acts by one or more students directed at another student that exploits an imbalance of power and involves written or verbal expression, expression through electronic means, or physical conduct, that:

1. will physically harm another student, damage a student's property, or place a student in fear of harm;
2. is severe, persistent, or pervasive enough to create an intimidating, threatening or abusive educational environment for the student;
3. disrupts the educational process or orderly operation of a classroom or school; or
4. infringes on the rights of the victim.

BULLYING IS...

Texas Education Code defines bullying as **an act or pattern of acts**



BULLYING IS...

Texas Education Code defines bullying as an act or pattern of acts **by one or more students directed at another student** that exploits an imbalance of power

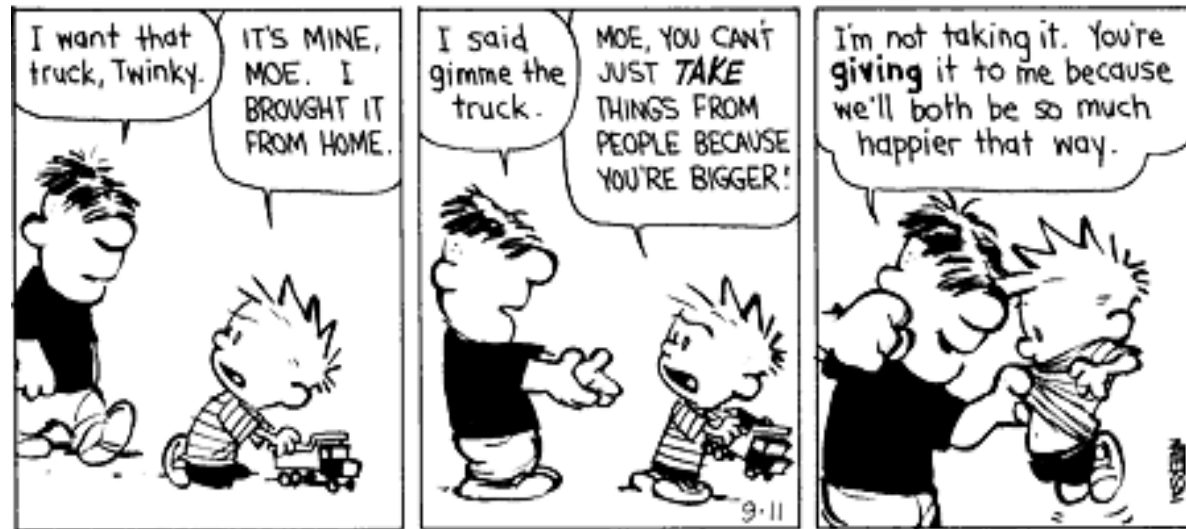


KNOWINGLY and INTENTIONALLY

Physical Size/Strength Intellect Social Status Access to Information Audience Anonymity

BULLYING IS...

Texas Education Code defines bullying as an act or pattern of acts by one or more students directed at another student that exploits an imbalance of power and **involves written or verbal expression, expression through electronic means, or physical conduct**



FORMS OF BULLYING

PHYSICAL



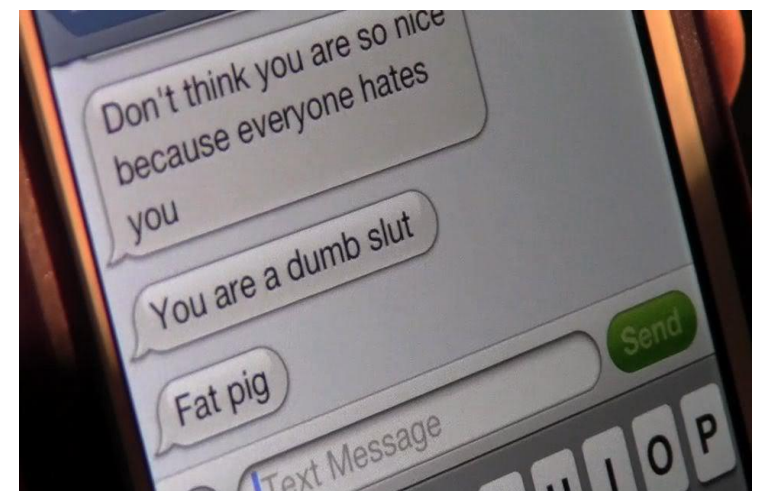
SOCIAL



VERBAL/WRITTEN



CYBER



BULLYING IS...

Texas Education Code defines bullying as **an act or pattern of acts** by one or more students directed at another student that **exploits an imbalance of power** and **involves written or verbal expression, expression through electronic means, or physical conduct**, that:

1. **will physically harm another student, damage a student's property, or place a student in fear of harm;**
2. **is severe, persistent, or pervasive enough to create an intimidating, threatening or abusive educational environment for the student;**
3. **disrupts the educational process or orderly operation of a classroom or school; or**
4. **infringes on the rights of the victim.**

CAMPUS JURISDICTION



SCHOOL?



**SCHOOL_RELATED
ACTIVITY?**



**VEHICLE FOR
STUDENT
TRANSPORTATION?**

OFF-CAMPUS CYBERBULLYING

**Interfere with a student's educational opportunities; or
substantially disrupt the orderly operation of a classroom,
school, or school-sponsored/related activity?**

BULLYING ISN'T.....

Disliking someone

Disagreement or
argument between
friends

One-time fight or
altercation

Accidental physical
contact

Cliques of students

Bossy

Telling a joke

Expressing difference of
opinion

CONFLICT



BOTH PARTIES ARE INVOLVED

BULLYING



ONE SIDED

Perspective Matters



Stranded on a dessert island,
finally a way out of here!



Lost at sea, finally some land!

BULLYING?



**WITHDRAWN, SAD,
ANXIOUS,
DEPRESSED**

**CHANGE IN
BEHAVIOR OR MOOD**

**LOW SELF-ESTEEM
AND LACK OF
CONFIDENCE**

DISLIKE SCHOOL

**DECLINE IN
ACADEMIC
PERFORMANCE**

**LOSE INTEREST IN
ACTIVITIES**

**BRUISES, CUTS,
DAMAGED PROPERTY**

**STOMACHACHES
AND/OR HEADACHES**

**CHANGE IN
SLEEPING
AND/EATING HABITS**

**AVOID TALKING
ABOUT SOCIAL
MEDIA, ANXIOUS
WHEN ON
TECHNOLOGY**

SELF-HARM

**SUICIDAL THOUGHTS
OR ATTEMPT SUICIDE**



**STRONG NEED TO
DOMINATE OTHERS**

**USES THREATS OR
INTIMIDATION TO
GET HIS/HER WAY**

**FEELS SUPERIOR TO
OTHERS**

**EASILY ANGERED
AND IMPULSIVE**

**OPPOSITIONAL,
DEFIANT, OR
AGGRESSIVE
BEHAVIOR
TOWARDS ADULTS**

**ANTISOCIAL
BEHAVIOR**

**DIFFICULTY
CONFORMING TO RULES**

**LOW TOLERANCE
FOR THOSE WHO ARE
DIFFERENT**

**MAKES FUN OF
OTHERS**

**FOCUSED ON BEING
POPULAR, EVEN IF
AT OTHERS'
EXPENSE**

BEING BULLIED

SELF HARM

**SUICIDAL THOUGHTS
OR ATTEMPT SUICIDE**

SO WHAT CAN YOU DO?

- ☐ Teach and model kindness, acceptance, and empathy
- ☐ Teach your child appropriate ways to deal with negative emotions
- ☐ Capitalize on teachable moments
- ☐ Set clear behavior expectations
- ☐ Set boundaries with technology
- ☐ Monitor technology and social media
- ☐ Monitor social gatherings
- ☐ Establish open lines of communication

TALKING TO YOUR CHILD ABOUT BULLYING

- What was the best thing that happened at school today?
- Who do you sit with at lunch? Play with at recess?
- What are your favorite classes? Why? What classes do you dislike ? Why?
- Who do you hang out with during school? Are there a lot of cliques at school? How do you feel about them?
- Are there any students at school that you dislike? Why don't you like them? What do they say or do that you don't like?
- I've heard a lot about bullying in the news. Is that going on at your school?
- I've noticed....., is there something going on at school or at home that is upsetting you?
- Is there anyone at school who has said or done anything to upset you? Did he/she do that on purpose?" Did you tell him/her to stop? Did he/she keep going?

IF YOUR CHILD IS THE TARGET

Stay calm and listen
without judgement

Ask for details and
document

Praise your child for
talking to you

Reassure your child that
it isn't his/her fault

Meet with the campus

Create a support plan

Build resiliency

Seek counseling if
necessary

IF YOUR CHILD IS THE AGGRESSOR

Stay calm

Take immediate action

Find out "why"

Set clear expectations
and reinforce

Partner with the school

Seek help if necessary

IF YOUR CHILD IS A BYSTANDER

Encourage your child to
be an Upstander

Praise your child for
being an Upstander

Monitor your child for
residual impact

Seek counseling if
necessary

CONTACT INFORMATION

edithwhite@katyisd.org

281-396-2085

